


PAEP

PIANO DELLE ATTIVITA' ESTRATTIVE PROVINCIALE

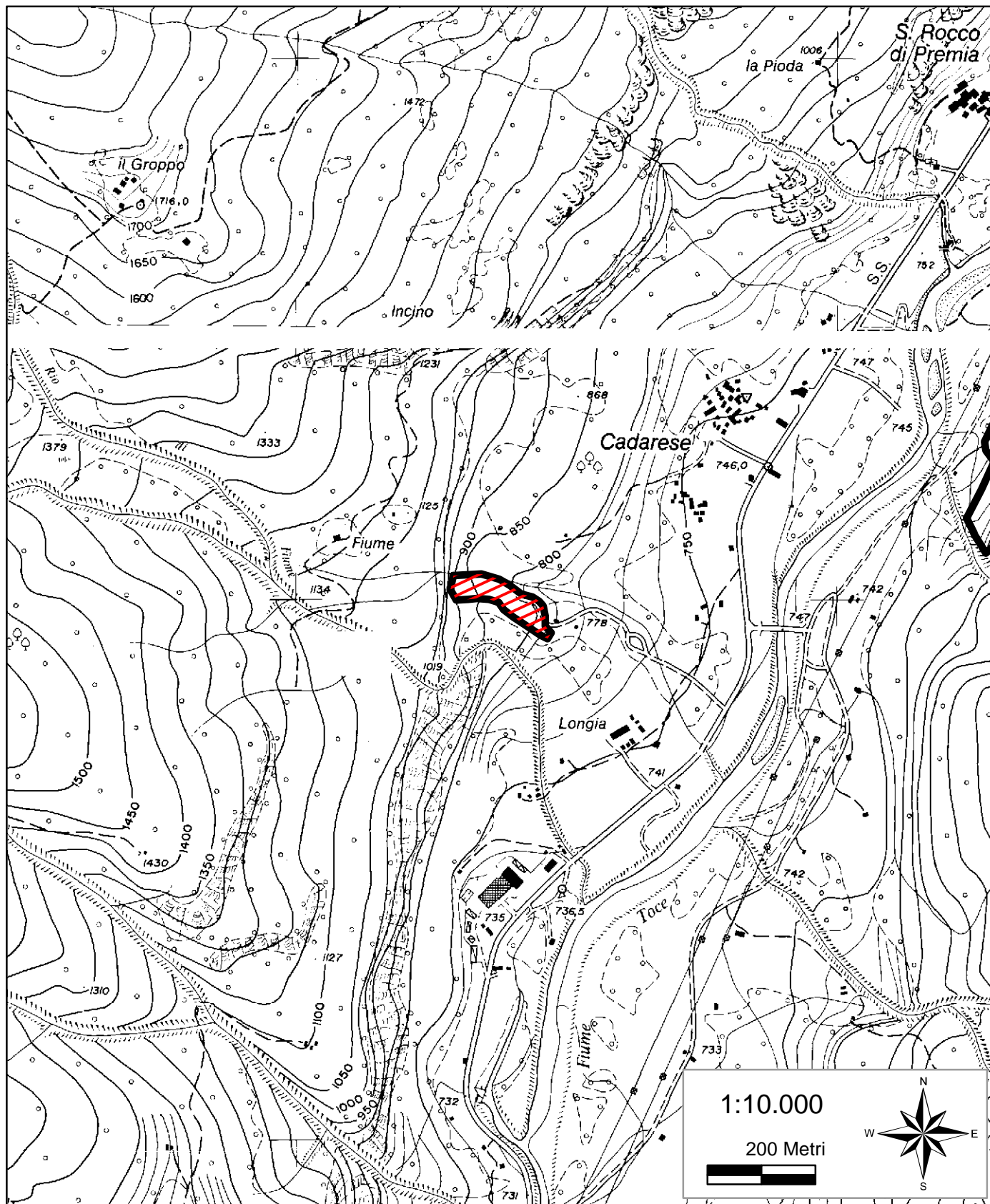
TAVOLE CON UBICAZIONE DELLE CAVE S.O.V.

Elaborato	Fase	Scala	Data
Allegato D			maggio 2009
		<p>Provincia del Verbano Cusio Ossola</p> <p><i>Dirigente Settore Ambiente e Georisorse</i> <i>ing. Mauro Proverbio</i></p> <p><i>Funzionari</i> <i>geom. Marco Carozza</i> <i>p.i. Francesca Spadone</i> <i>ing. Moira Tartari</i></p> <p>Politecnico di Torino - Dipartimento di Ingegneria del Territorio dell'Ambiente e delle Geotecnologie</p> <p><i>prof. Riccardo Sandrone</i></p>	
Versione	Data aggiornamento	Atto di adozione	Atto di approvazione
1			

ELENCO DELLE TAVOLE DELLE CAVE S.O.V.

- D1** – Rio Fiume
- D2** – Fruetta
- D3** – Passo
- D4** – Crotto di Fogarso
- D5** – Rivasco 2
- D6** – Presa Pioda
- D7** – Bort
- D8** – Ponte Romano
- D9** – Garou
- D10** – Sciuena
- D11** – Cramec
- D12** – Cneila
- D13** – Kighel
- D14** – Bruggi
- D15** – Boschetto
- D16** – Scala dei Ratti
- D17** – Seula
- D18** – Ex Locatelli
- D19** – Monte Camoscio
- D20** – Montorfano
- D21** – Tane
- D22** – Passo Cugegno
- D23** – Maddalena

CAVA S.O.V. "RIO FIUME"



Legenda



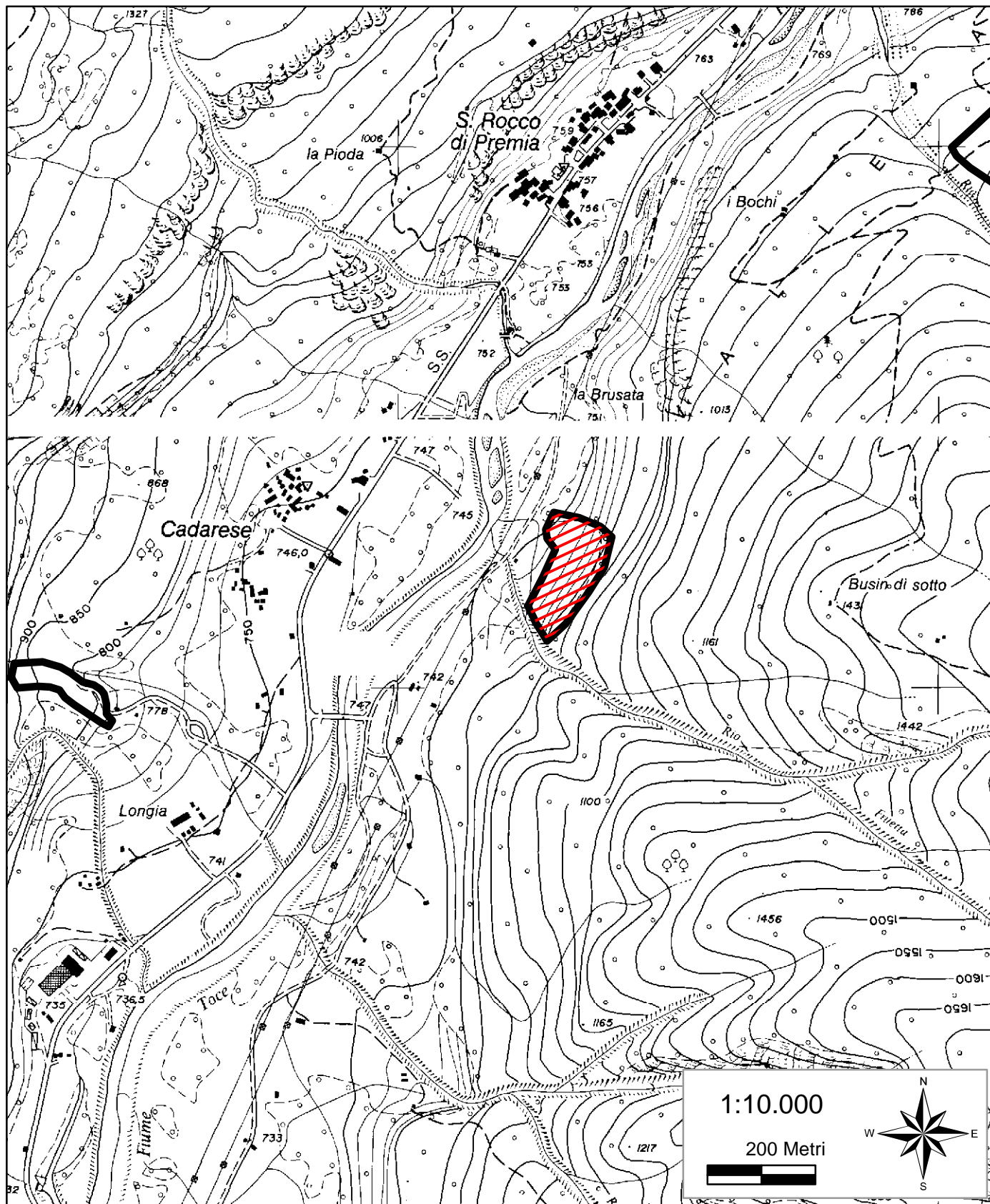
-  CAVE ESISTENTI
-  CAVA RIO FIUME

TAVOLA D 1

CAVA S.O.V. "FRUETTA"



Legenda



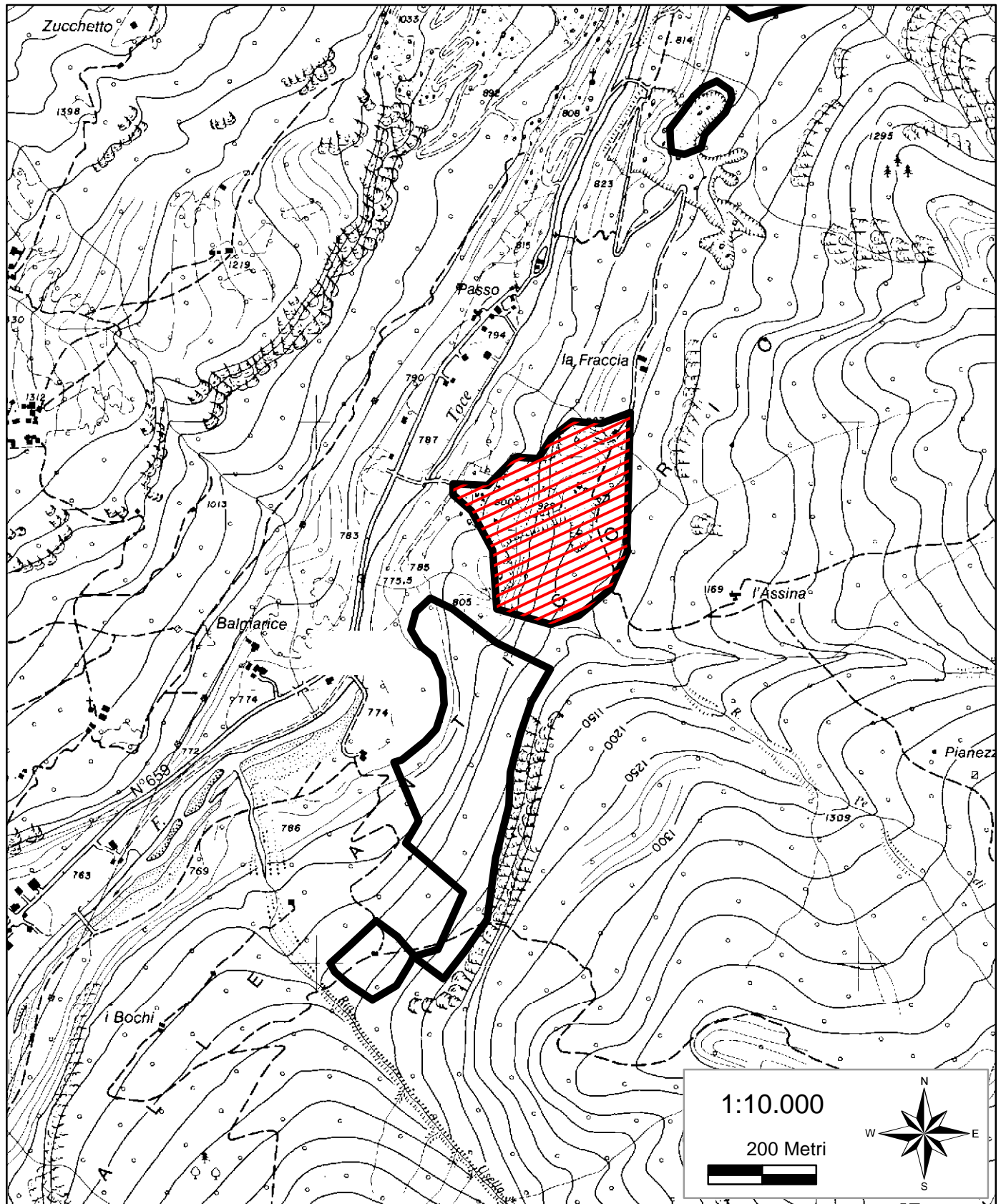
-  CAVE ESISTENTI
-  CAVA FRUETTA

TAVOLA D 2

CAVA S.O.V. "PASSO"



Legenda



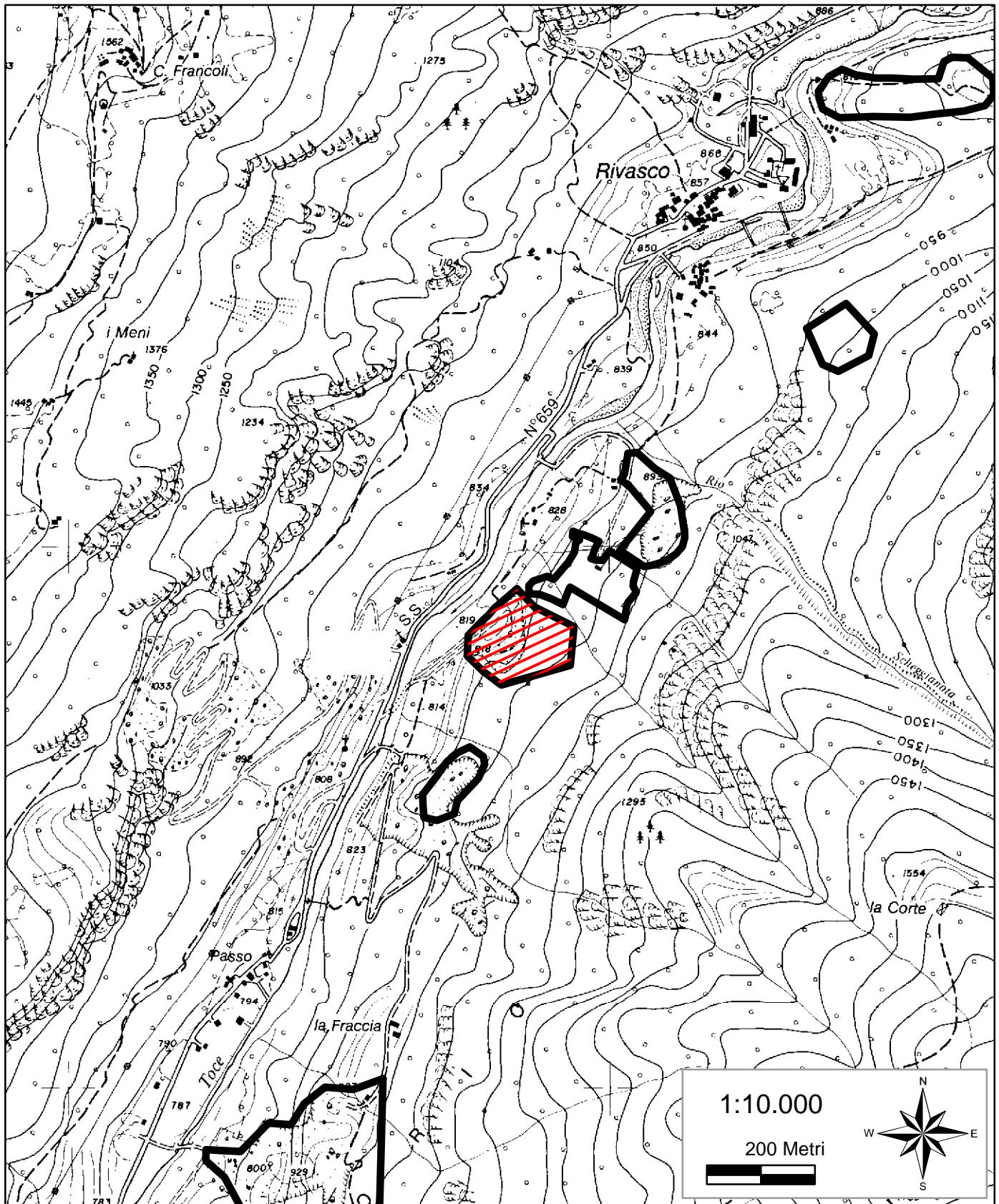
-  CAVE ESISTENTI
-  CAVA PASSO

TAVOLA D 3

CAVA S.O.V. "CROTTO DI FOGARSO"



Legenda



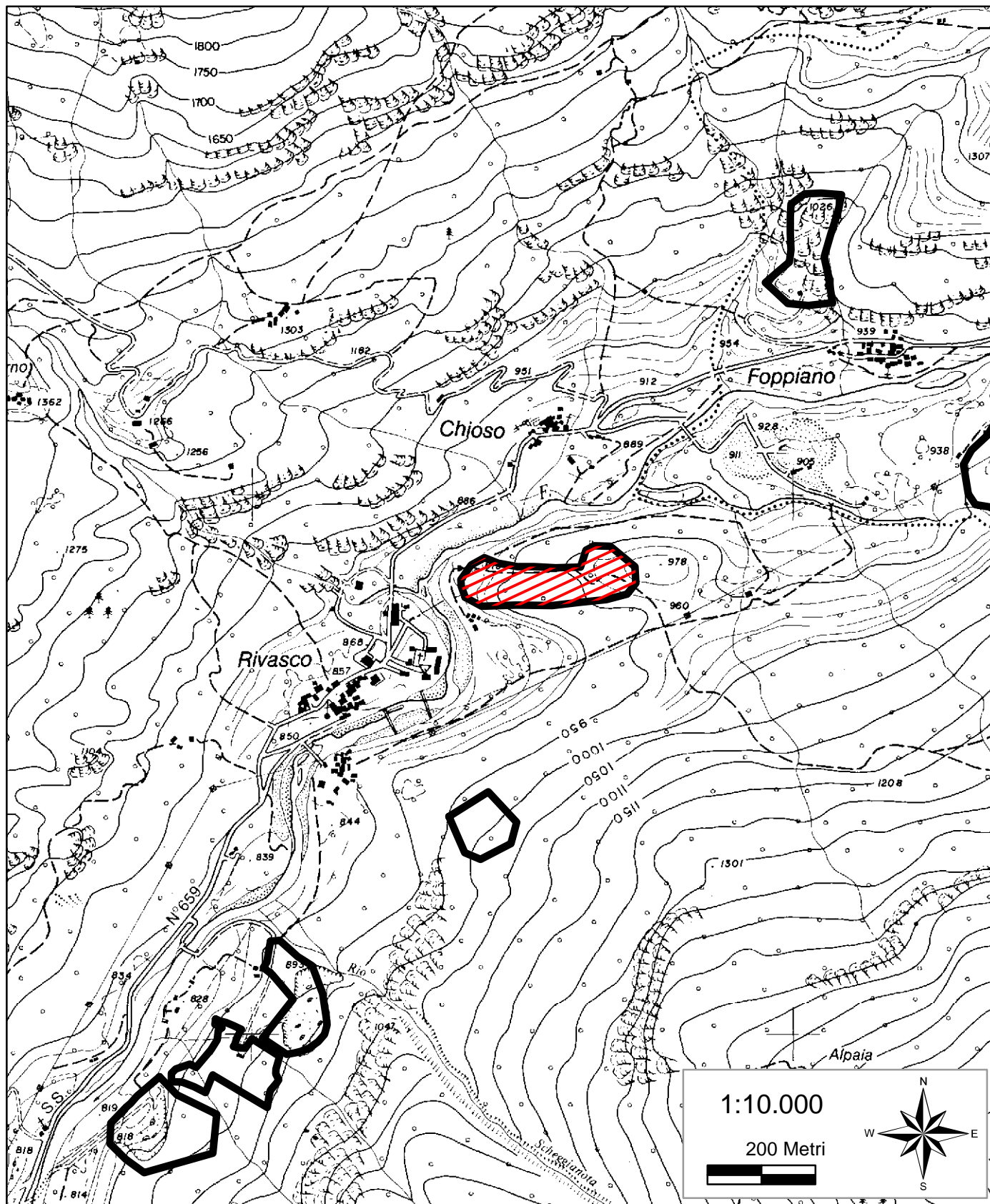
-  CAVE ESISTENTI
-  CAVA CROTTO DI FOGARSO

TAVOLA D 4

CAVA S.O.V. "RIVASCO 2"



Legenda



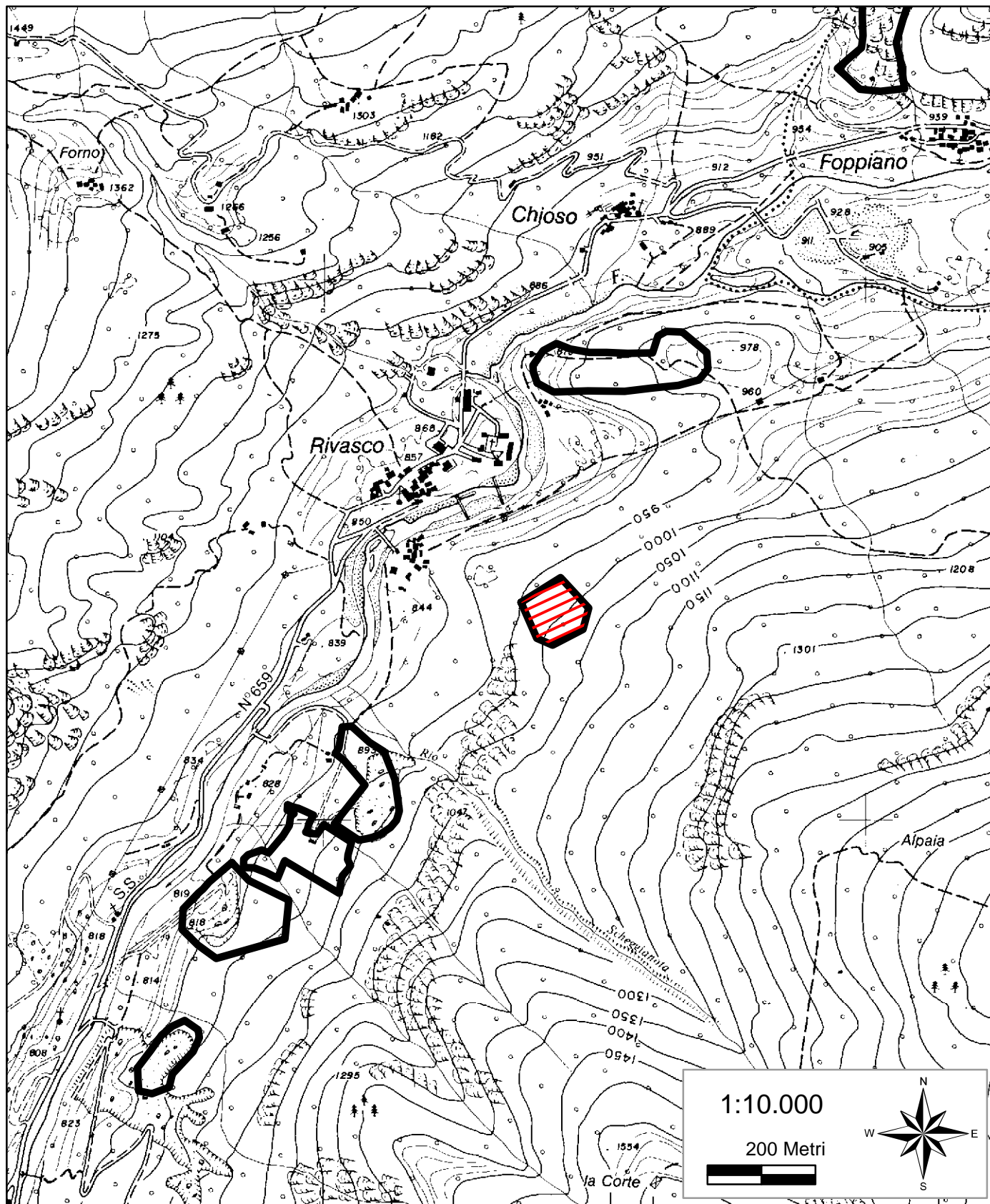
-  CAVE ESISTENTI
-  CAVA RIVASCO 2

TAVOLA D 5

CAVA S.O.V. "PRESA PIODA"



Legenda



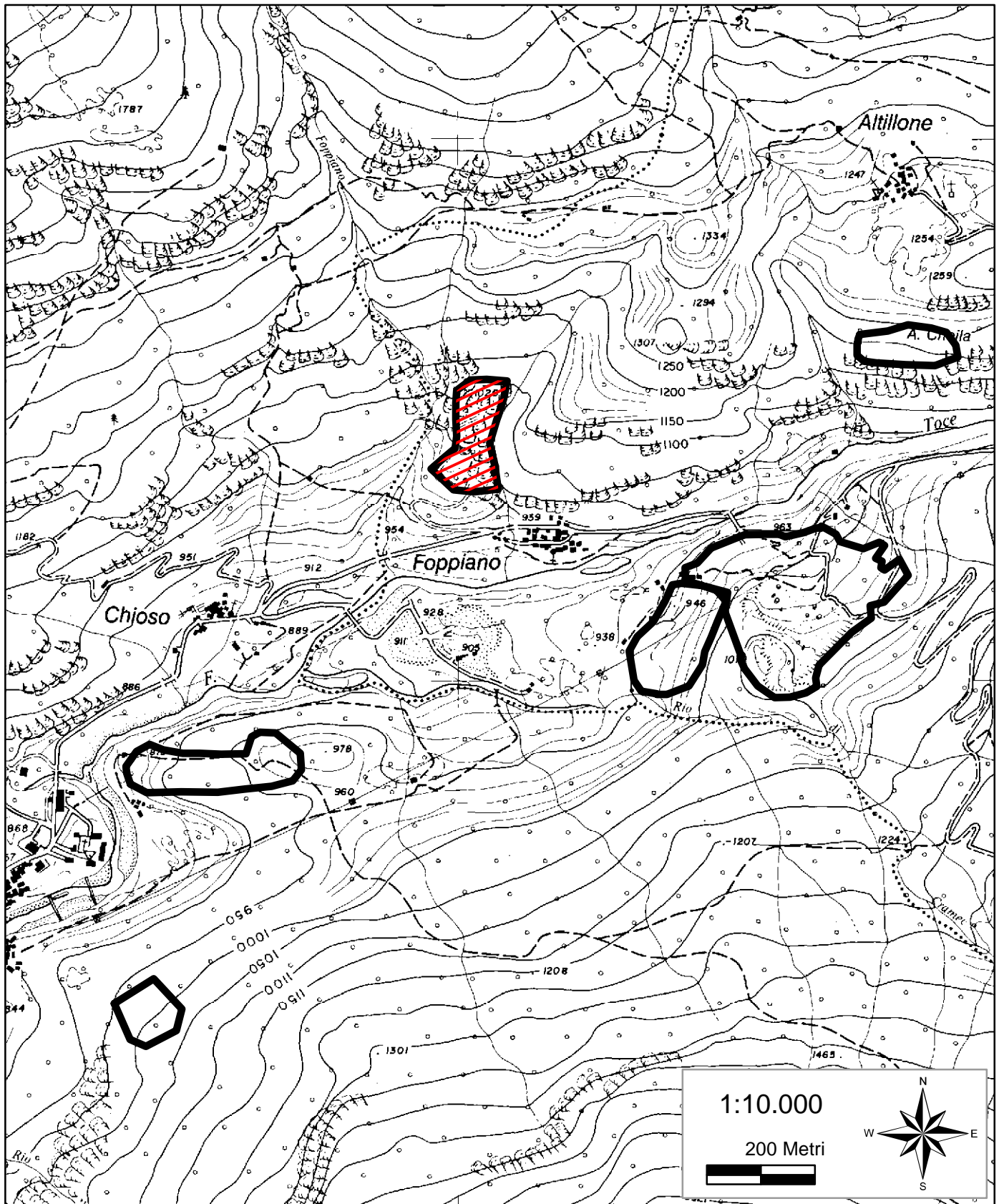
-  CAVE ESISTENTI
-  CAVA PRESA PIODA

TAVOLA D 6

CAVA S.O.V. "BORT"



Legenda



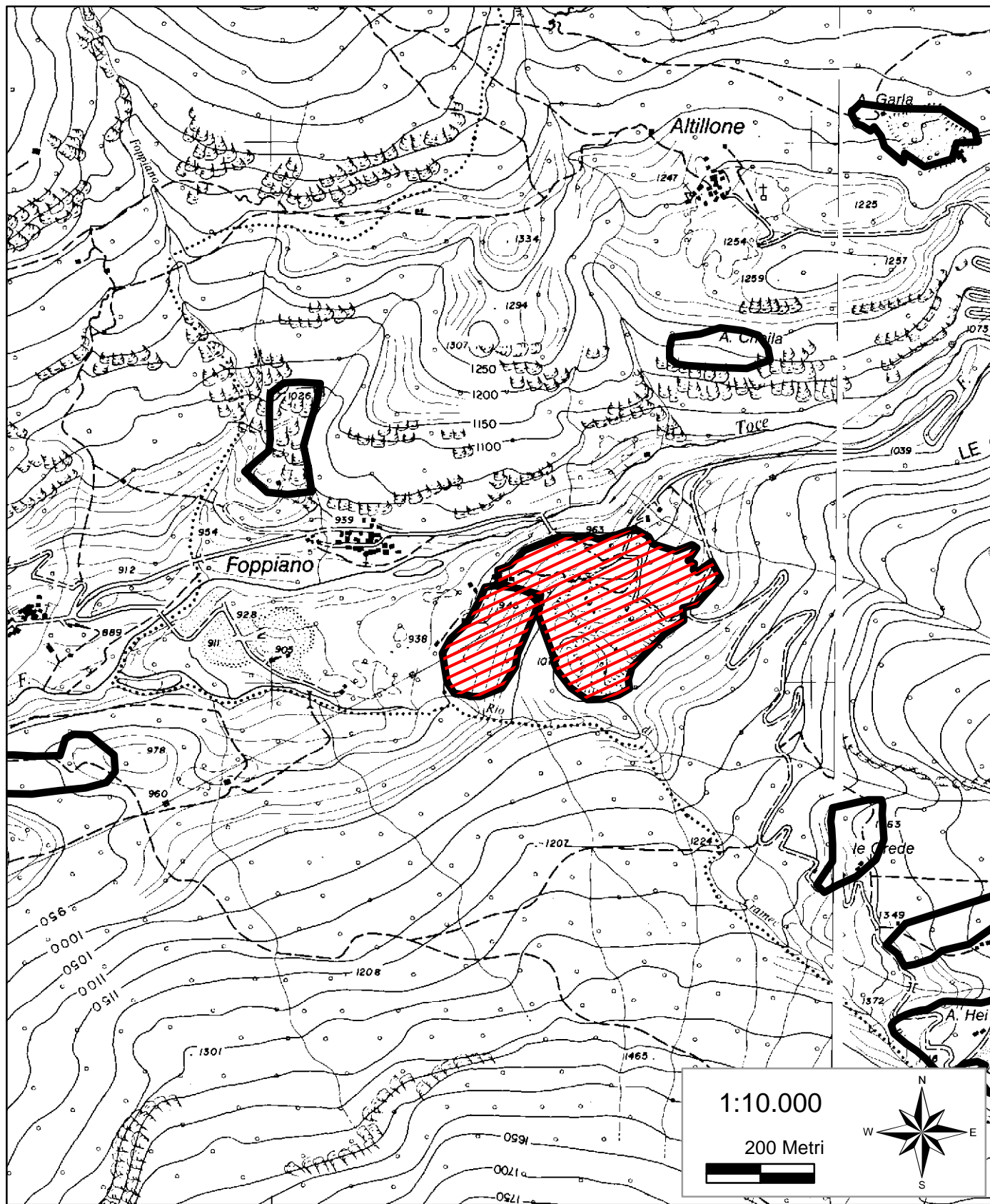
-  CAVE ESISTENTI
-  CAVA BORT

TAVOLA D 7

CAVA S.O.V. "PONTE ROMANO"



Legenda



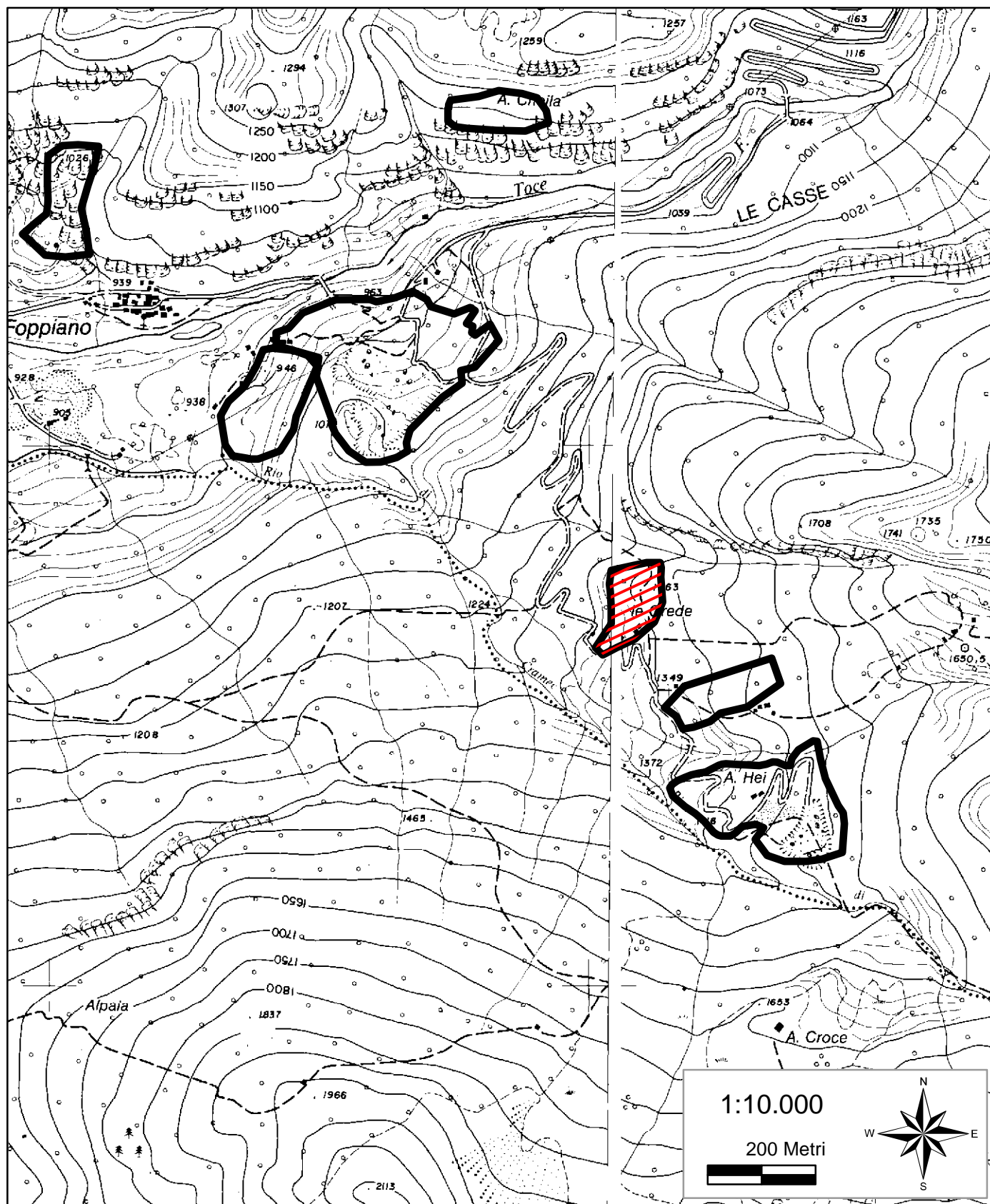
CAVE ESISTENTI



CAVA PONTE ROMANO

TAVOLA D 8

CAVA S.O.V. "GAROU"



Legenda



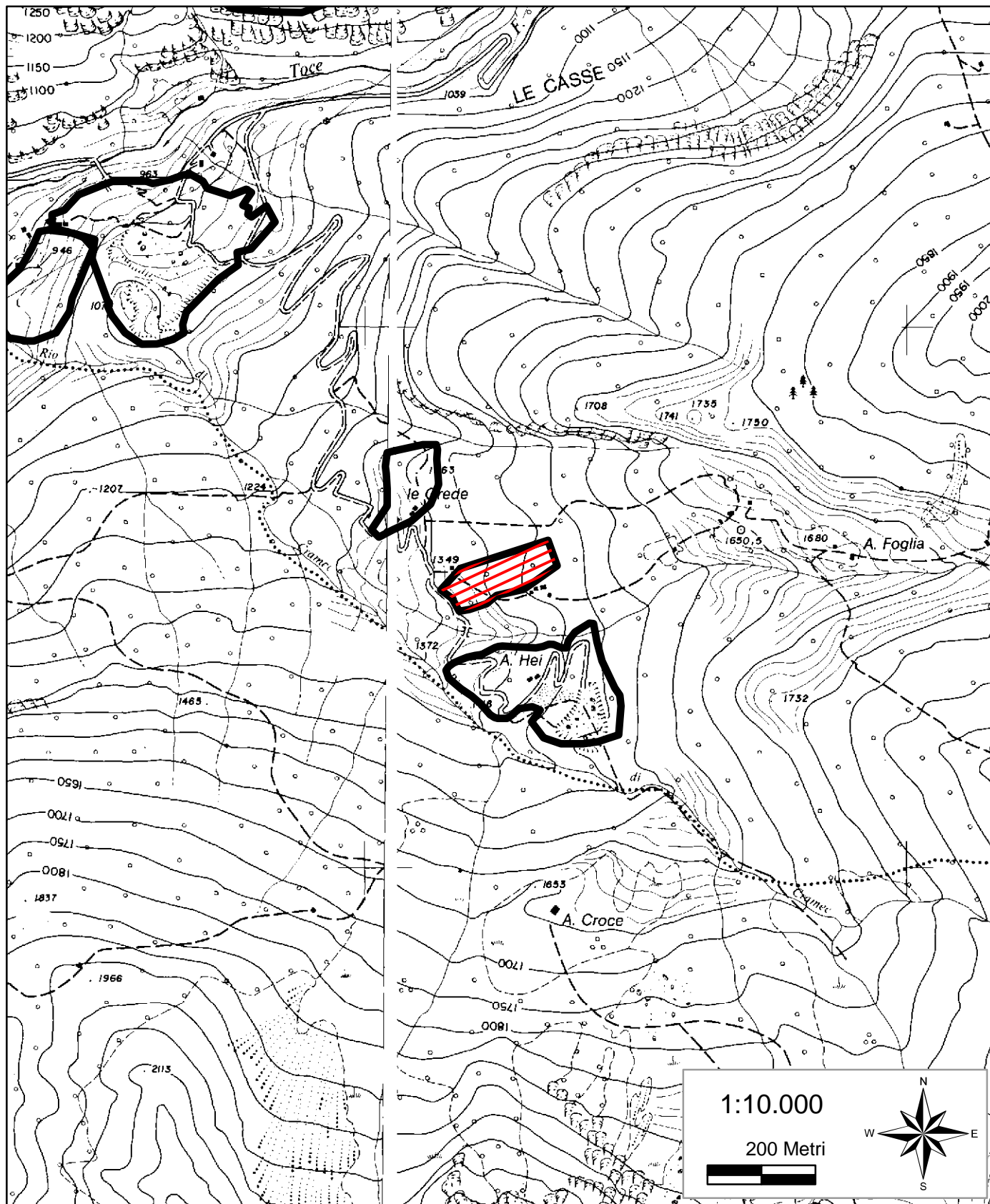
-  CAVE ESISTENTI
-  CAVA GAROU

TAVOLA D 9

CAVA S.O.V. "SCIUENA"



Legenda



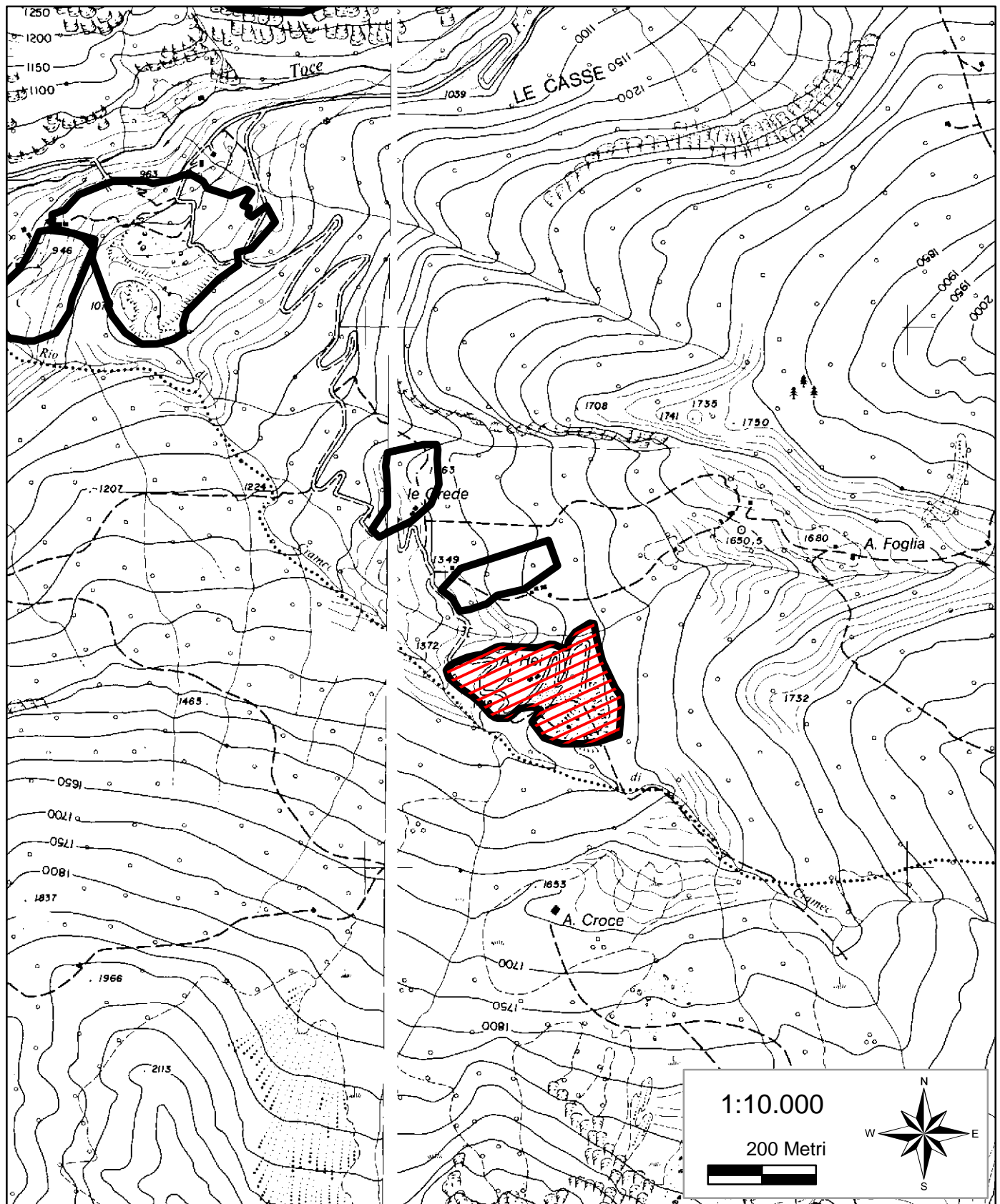
-  CAVE ESISTENTI
-  CAVA SCIUENA

TAVOLA D 10

CAVA S.O.V. "CRAMEC"



Legenda



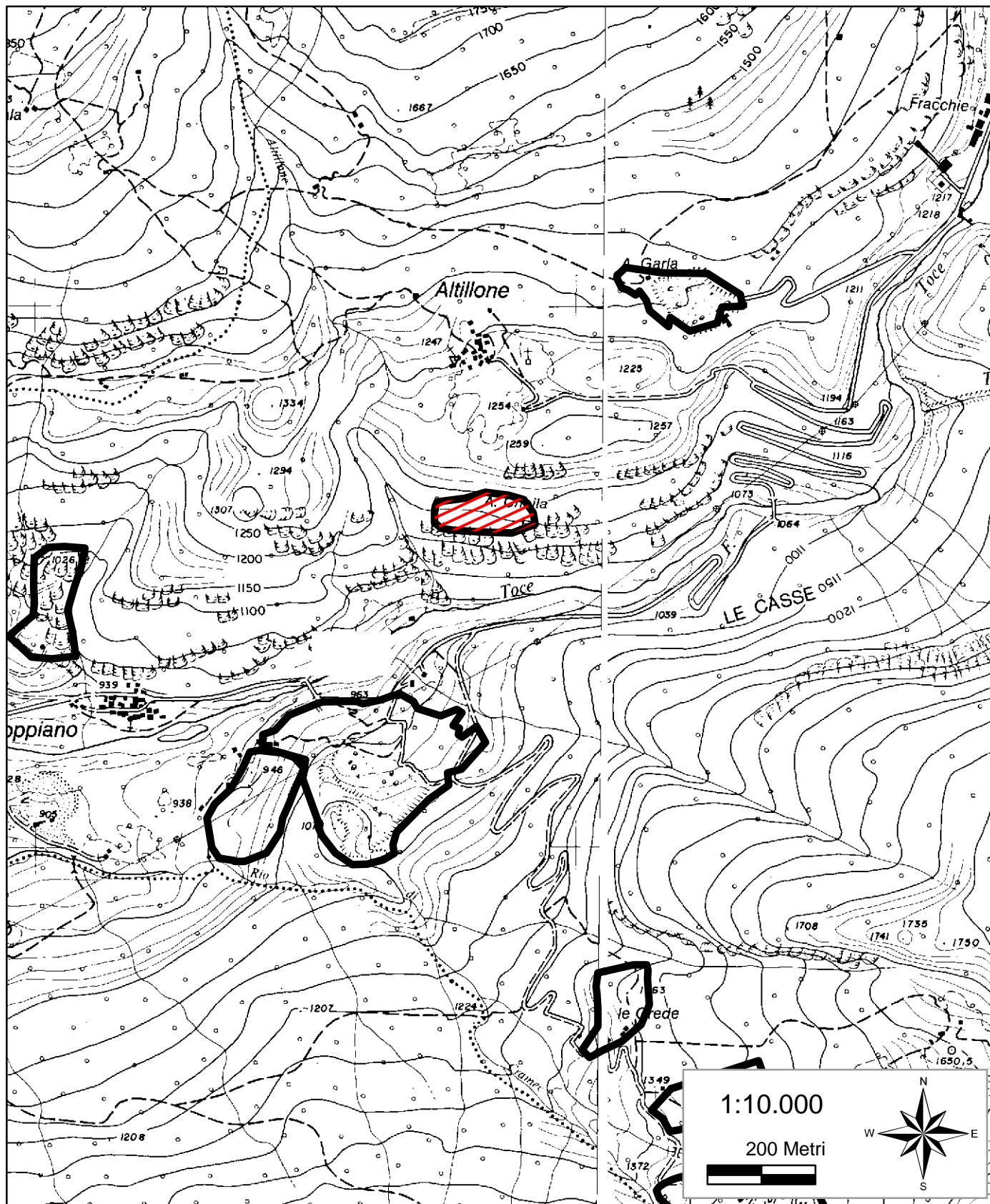
-  CAVE ESISTENTI
-  CAVA CRAMEC

TAVOLA D 11

CAVA S.O.V. "CNEILA"



Legenda



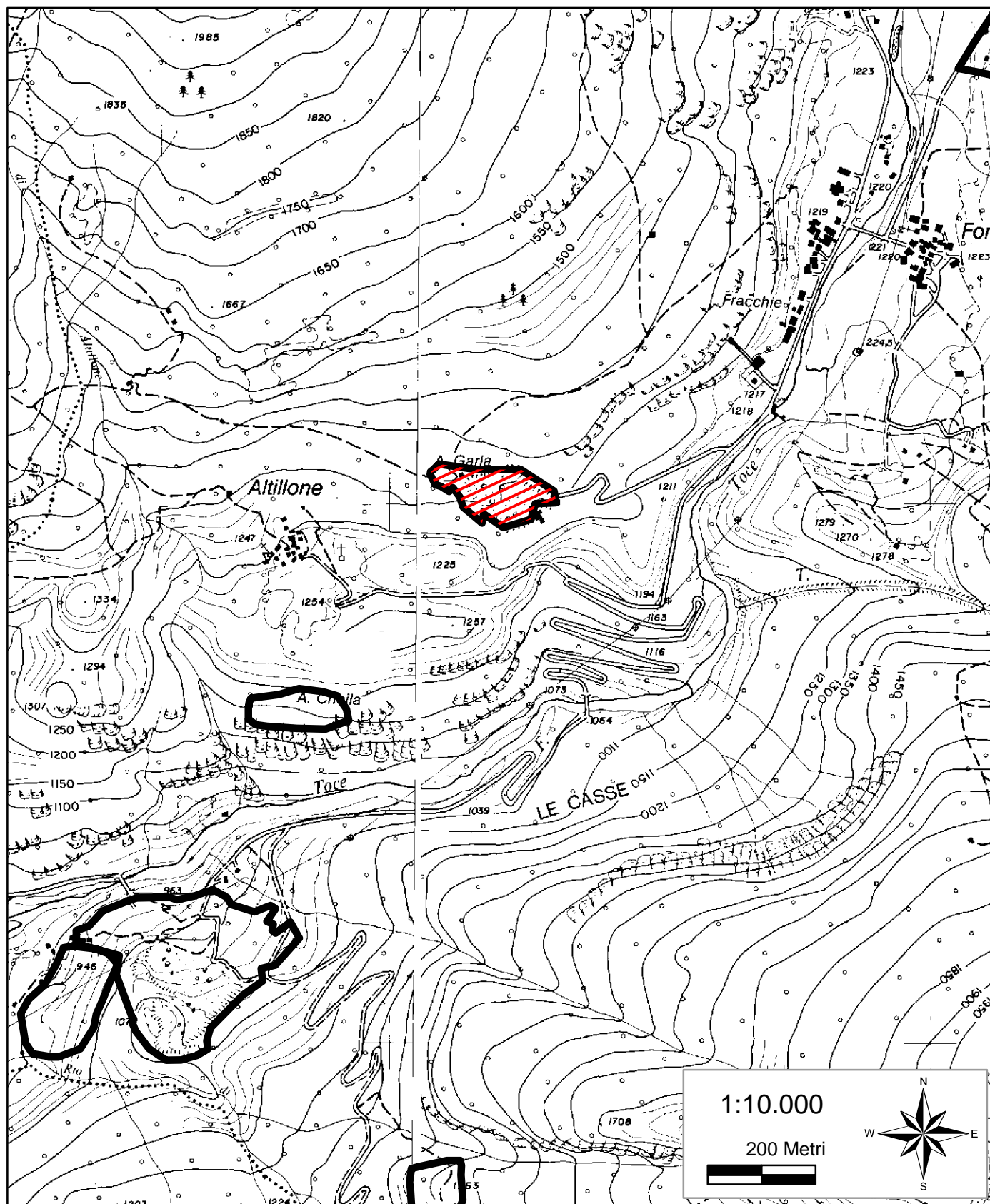
-  CAVE ESISTENTI
-  CAVA CNEILA

TAVOLA D 12

CAVA S.O.V. "KIGHEL"



Legenda



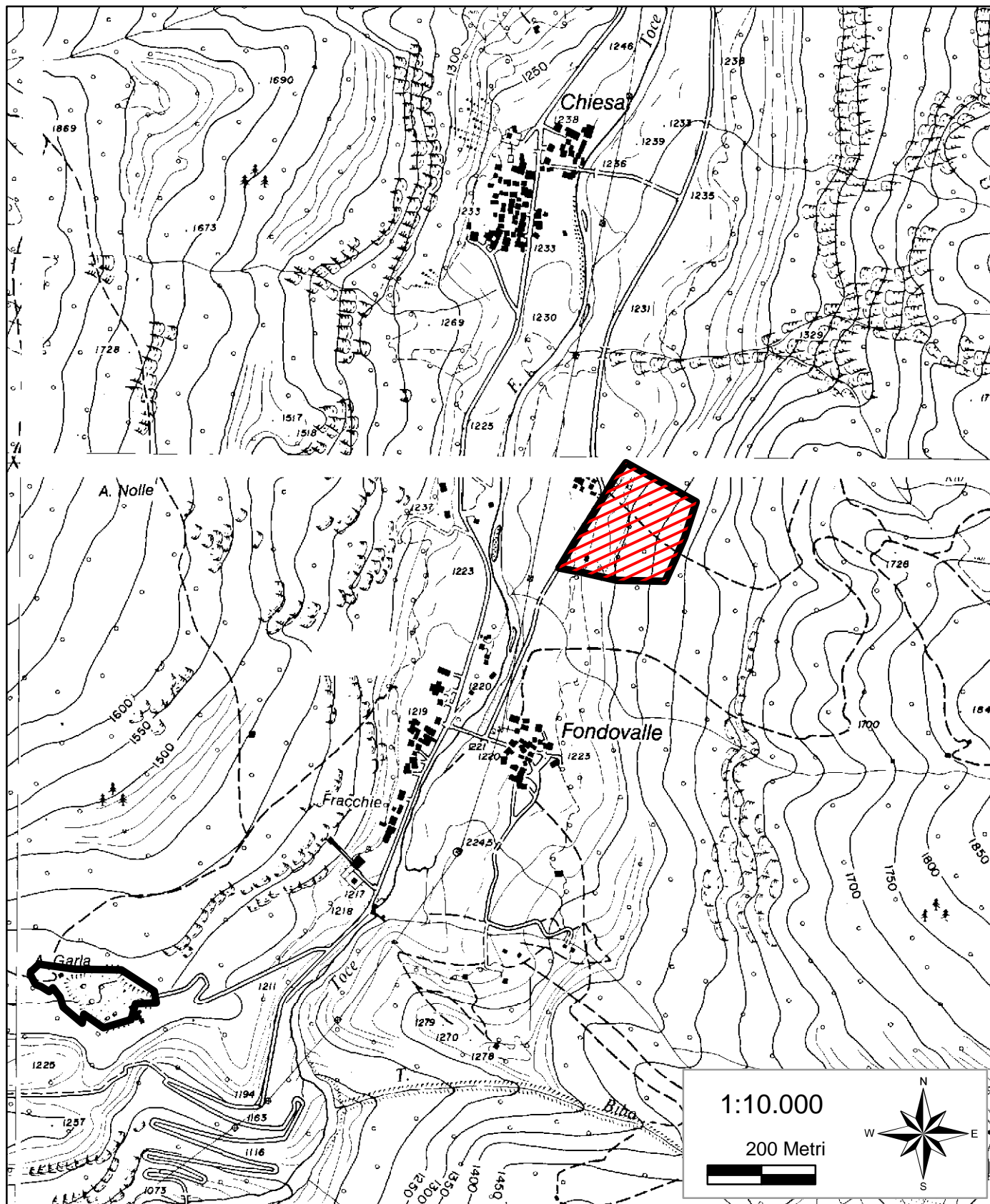
-  CAVE ESISTENTI
-  CAVA KIGHEL

TAVOLA D 13

CAVA S.O.V. "BRUGGI"



Legenda



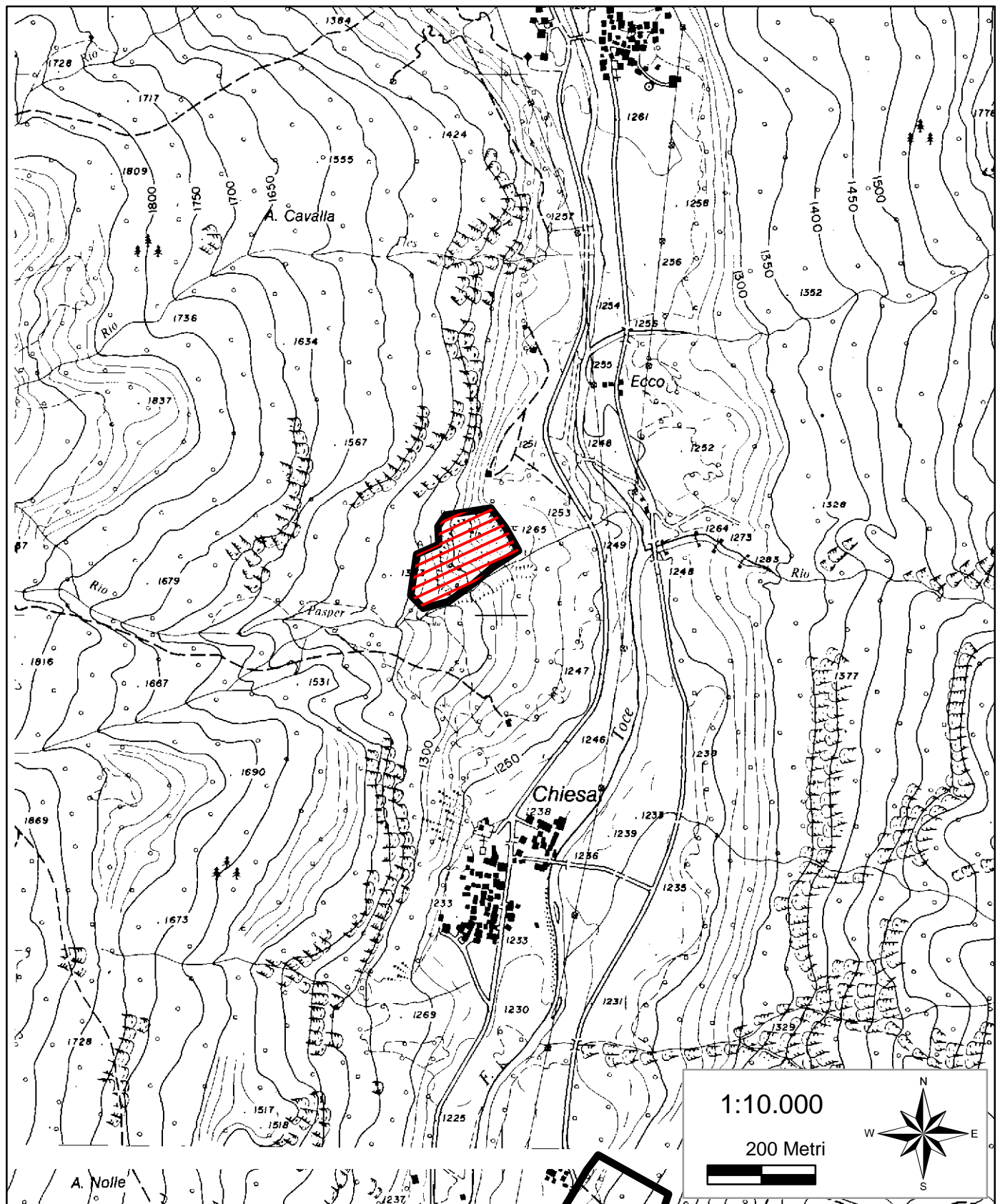
CAVE ESISTENTI



CAVA BRUGGI

TAVOLA D 14

CAVA S.O.V. "BOSCHETTO"



Legenda

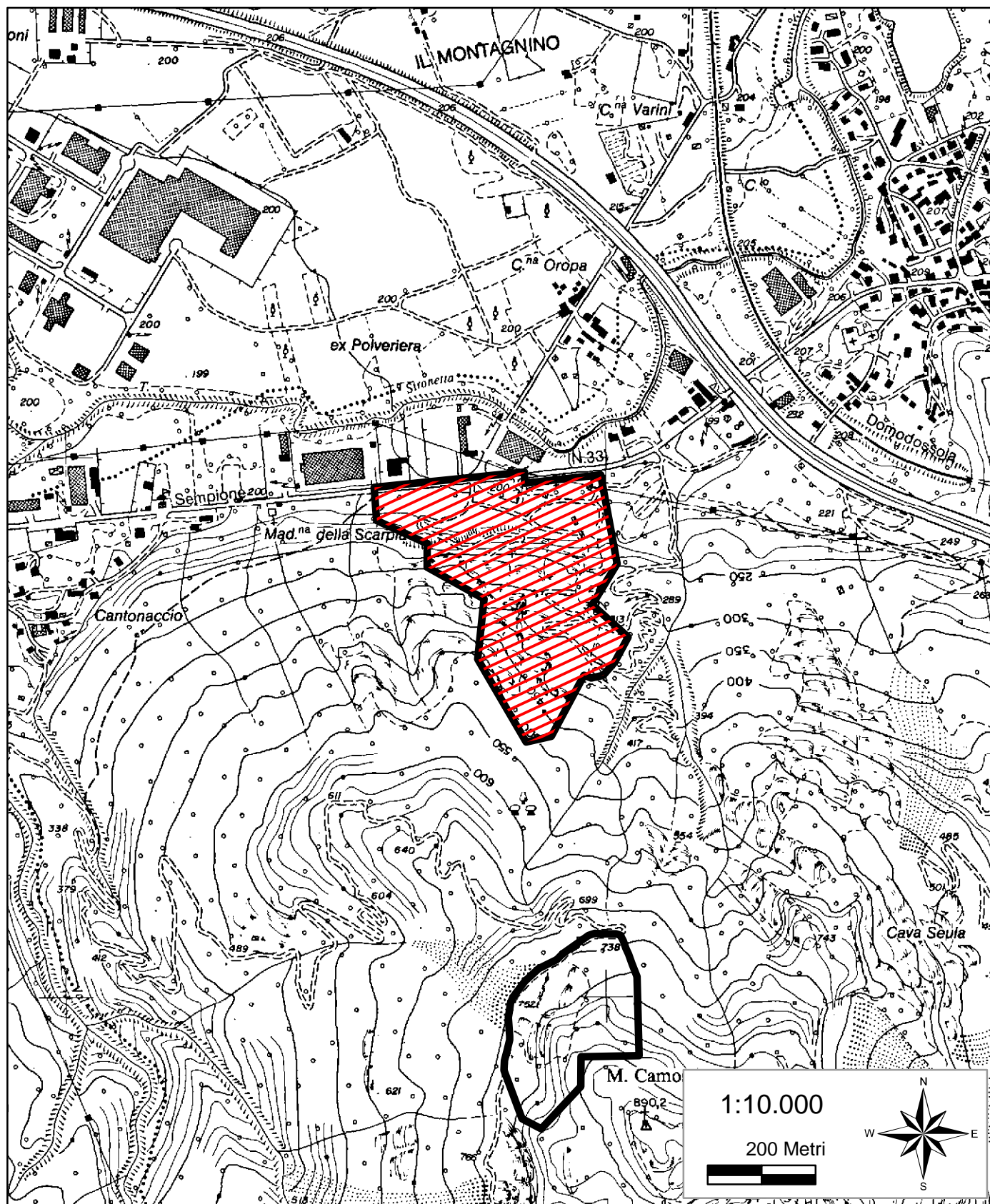


CAVE ESISTENTI

CAVA BOSCHETTO

TAVOLA D 15

CAVA S.O.V. "SCALA DEI RATTI"



Legenda



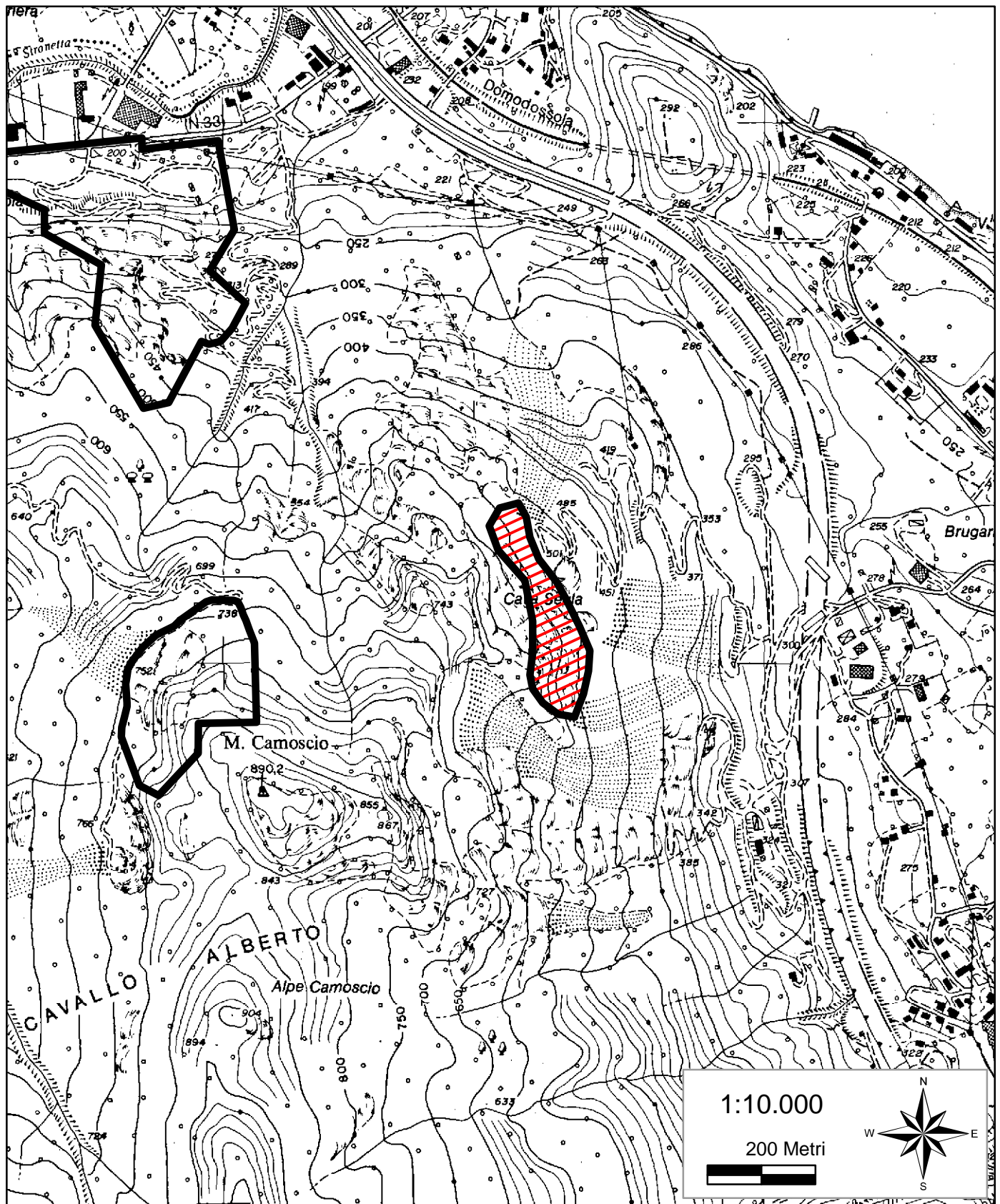
-  CAVE ESISTENTI
-  CAVA SCALA DEI RATTI

TAVOLA D 16

CAVA S.O.V. "SEULA"



Legenda



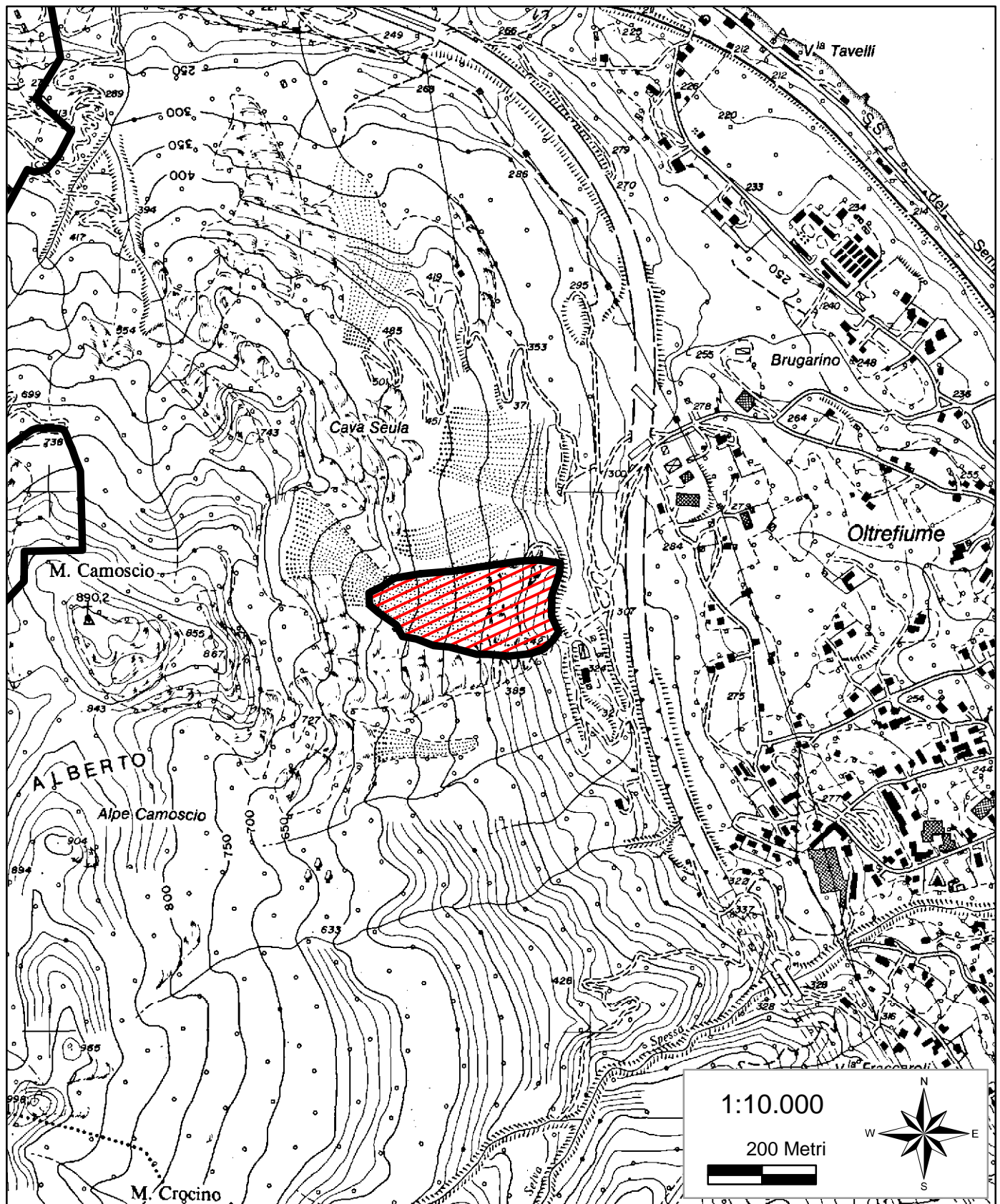
-  CAVE ESISTENTI
-  CAVA SEULA

TAVOLA D 17

CAVA S.O.V. "EX LOCATELLI"



Legenda



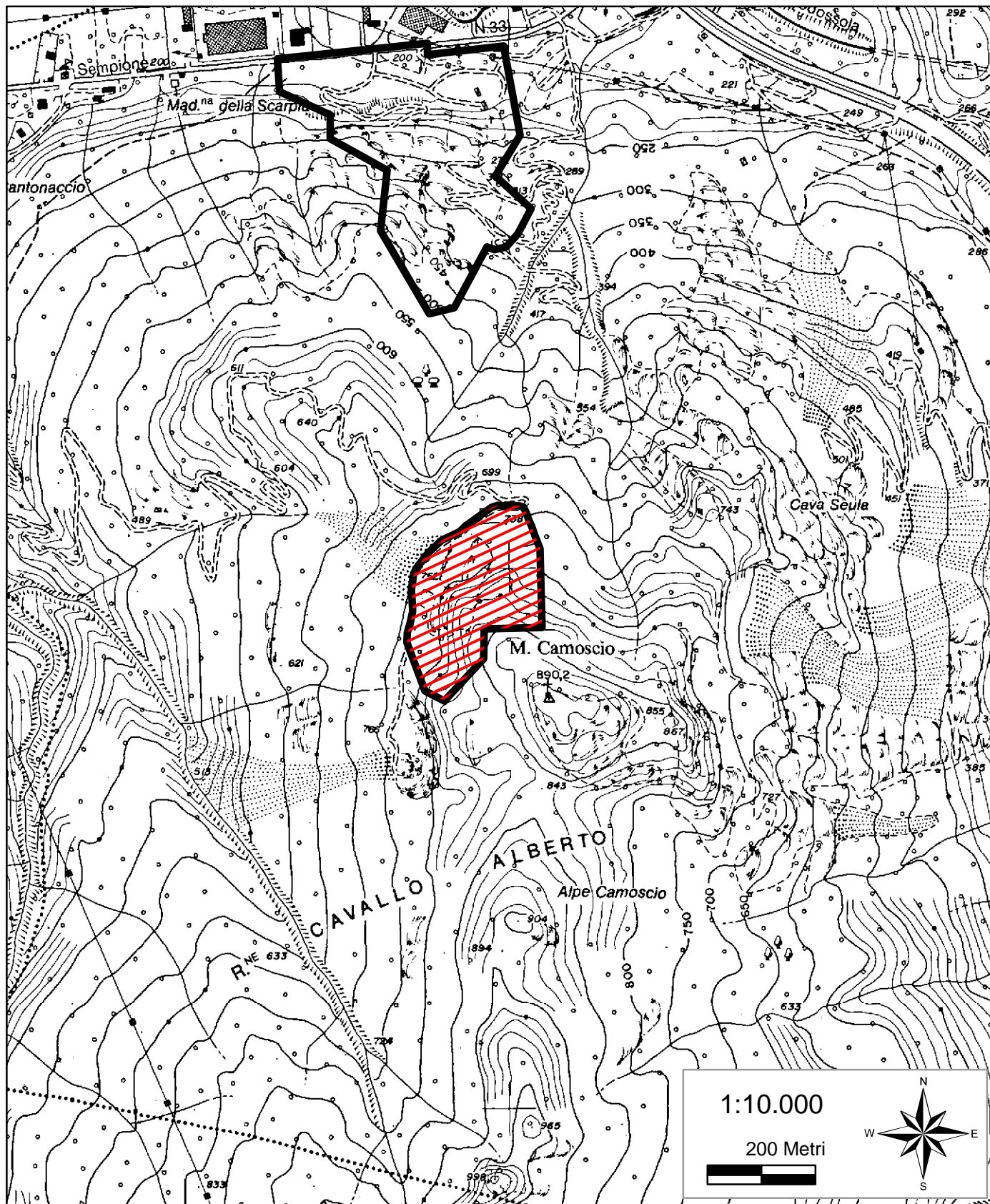
-  CAVE ESISTENTI
-  CAVA EX LOCATELLI

TAVOLA D 18

CAVA S.O.V. "MONTE CAMOSCIO"



Legenda



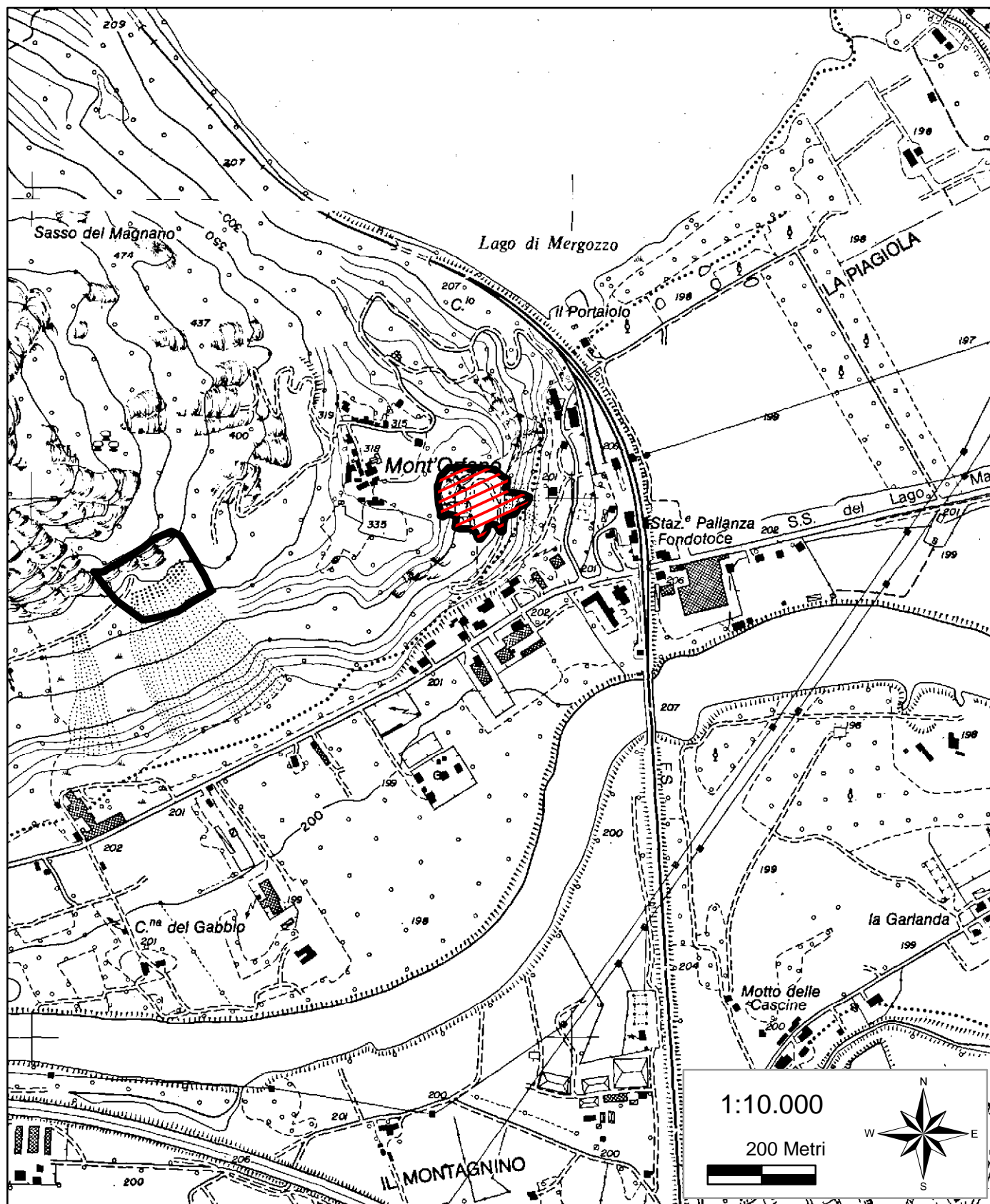
-  CAVE ESISTENTI
-  CAVA MONTE CAMOSCIO

TAVOLA D 19

CAVA S.O.V. "MONTORFANO"



Legenda



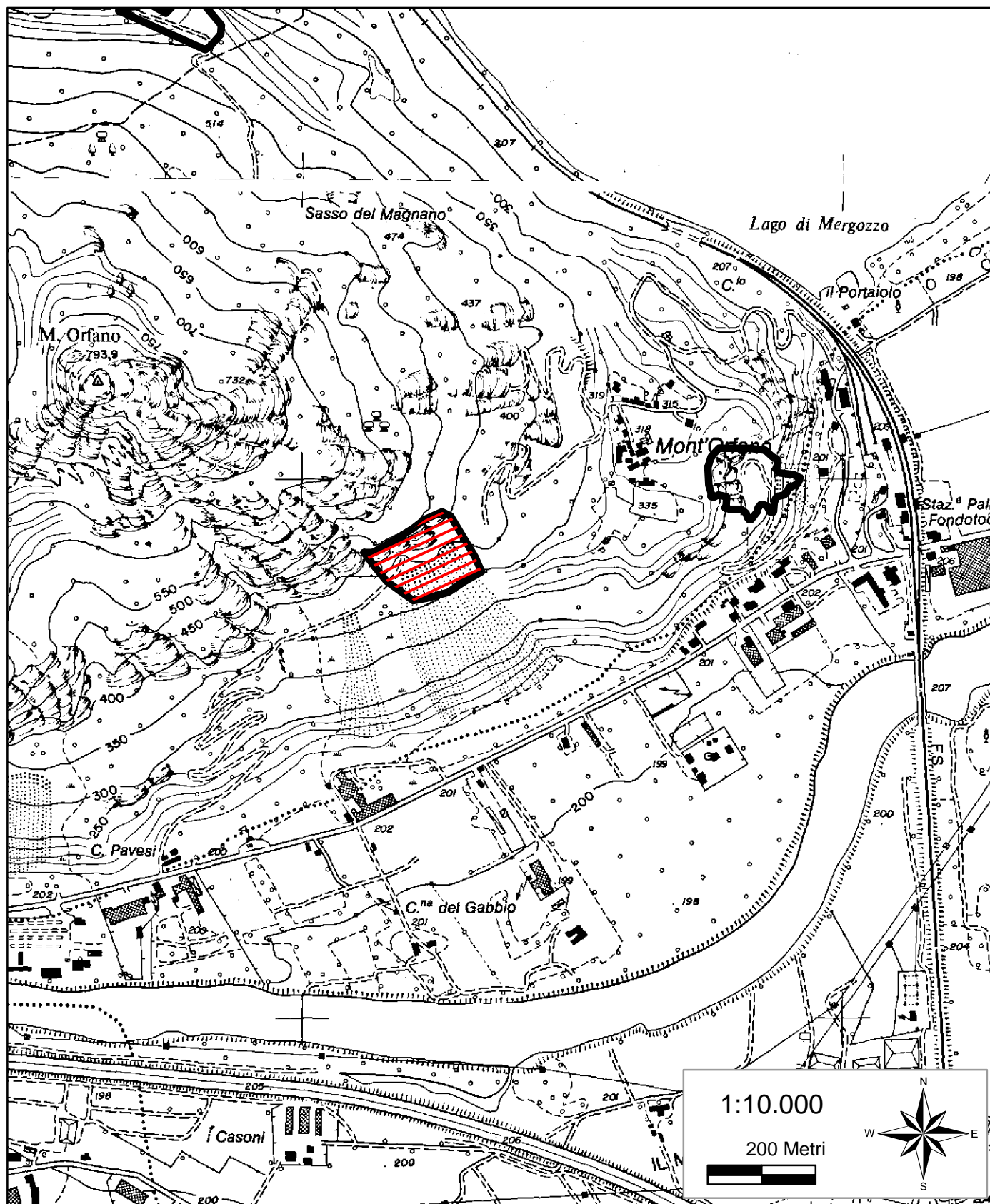
-  CAVE ESISTENTI
-  CAVA MONTORFANO

TAVOLA D 20

CAVA S.O.V. "TANE"



Legenda



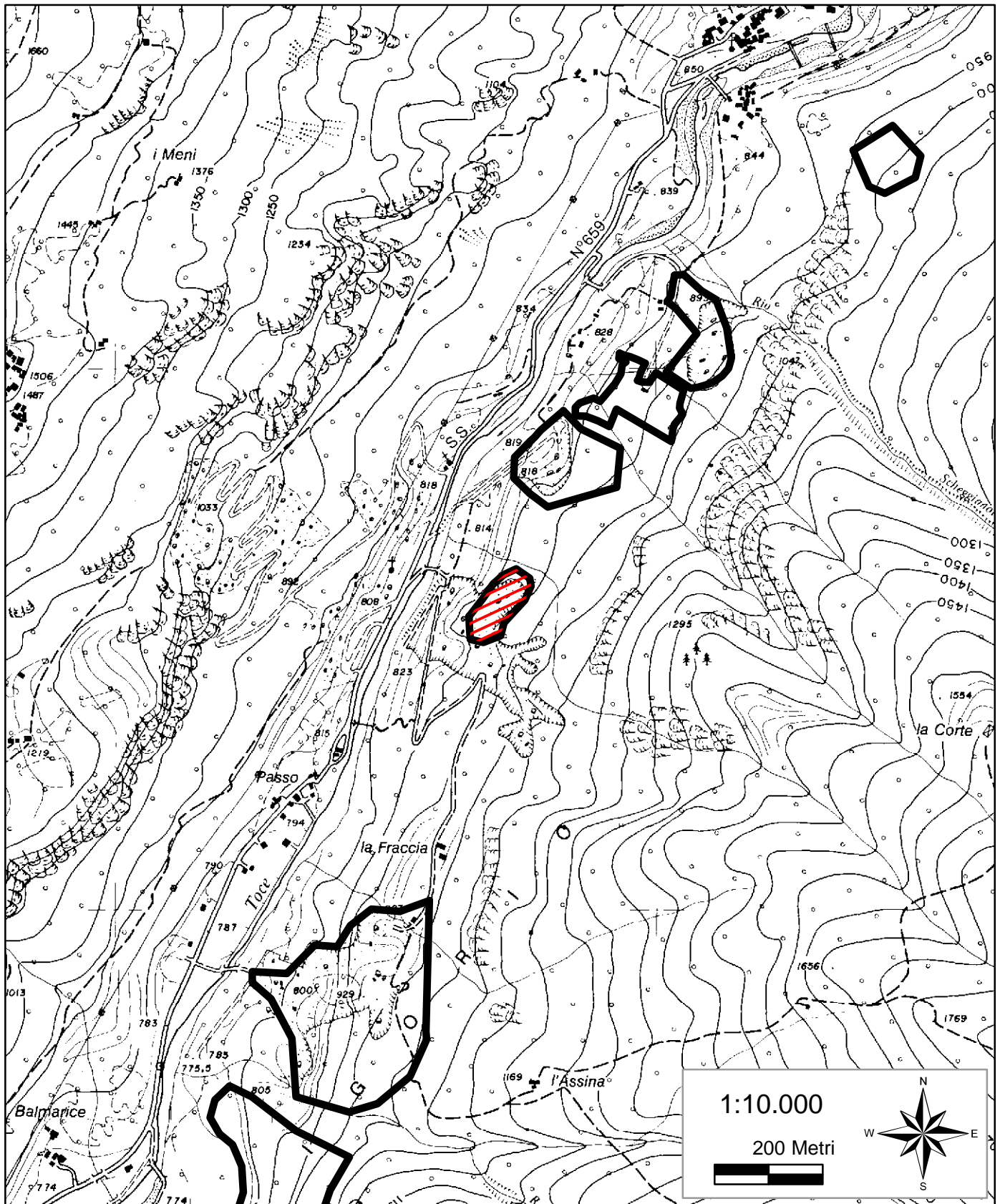
-  CAVE ESISTENTI
-  CAVA TANE

TAVOLA D 21

CAVA S.O.V. "PASSO CUGEGNO"



Legenda



CAVE ESISTENTI



CAVA PASSO CUGEGNO

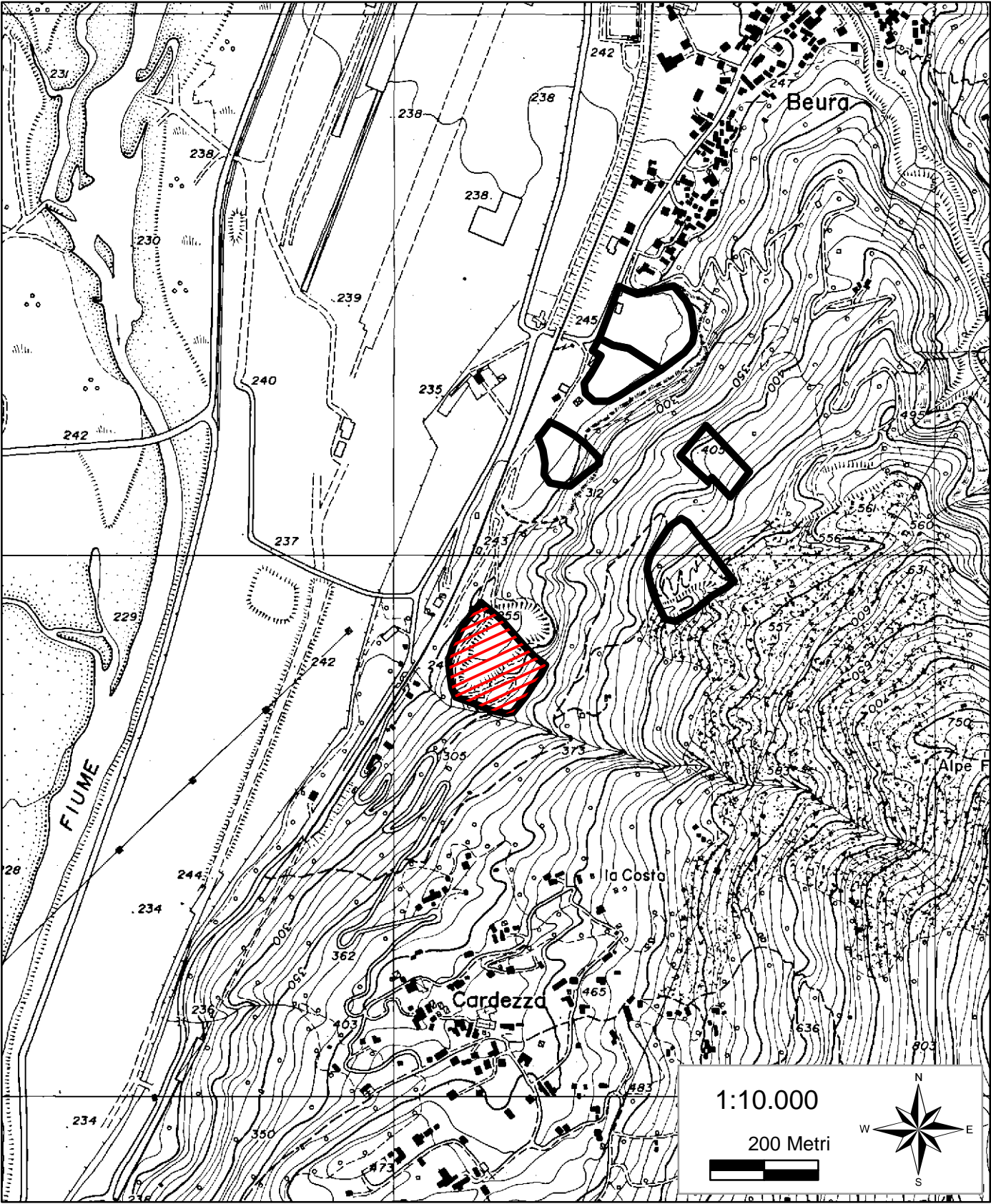
1:10.000

200 Metri



TAVOLA D 22

CAVA S.O.V. "MADDALENA"



Legenda



CAVE ESISTENTI



CAVA MADDALENA

TAVOLA D 23